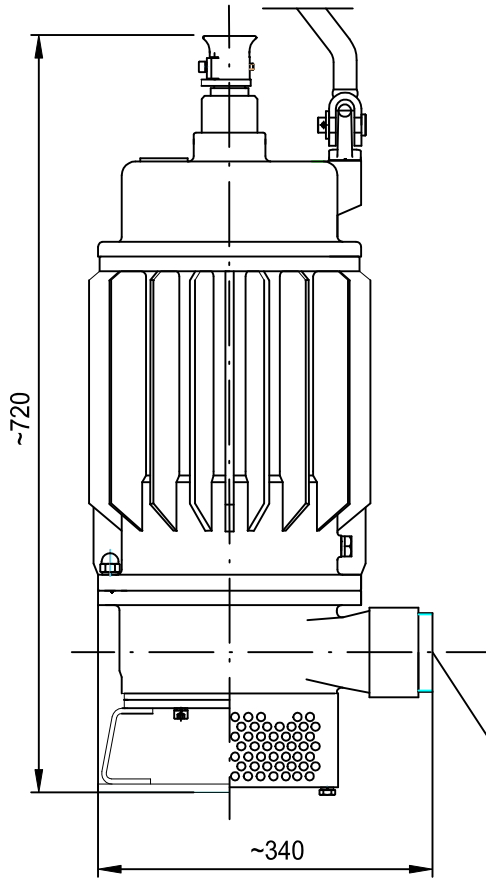
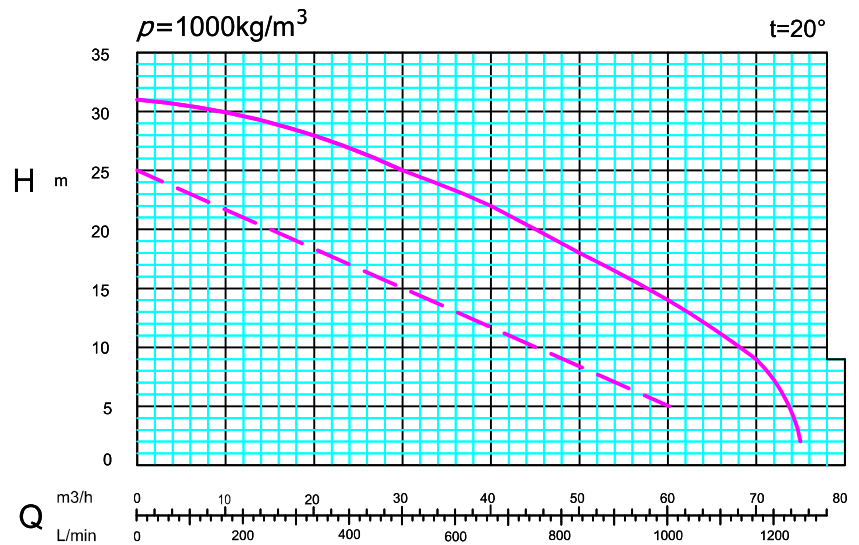
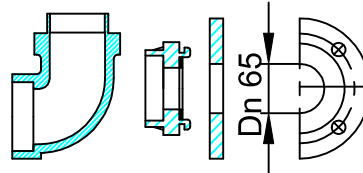


PUMP CHARACTERISTICS



Optional connections:



* impeller construction:
 — closed impeller (N)
 - - open impeller (O)

* voltage version:
 1 - voltage 400V
 2 - voltage 500V
 3 - voltage 1000V
 4 - voltage 500/1000V
 switchable engine

Pump is certified ATEX, number: OBAC 14 ATEX 0188X

PARAMETERS OF THE PUMP

		PSZ-65H*N			PSZ-65H*O		
		Efficiency	[m3/h]	0-75			0-60
Lift height	[m]	31-2			25-6		
Power	[kW]	5,5					
Voltage	[V]	400	500	1000	400	500	1000
Nominal power consumption	[A]	7,8	6,5	3,3	8,2	6,8	3,4
Rotational speed	[rotation/min]	2935					
Weight	[kg]	85					
Maximal submergence level	[m]	20					
Protection degree		IP 68					
Explosion proof marking		Ex IM2c Ex dI Mb					
Max impurity	[mm]	8			40		