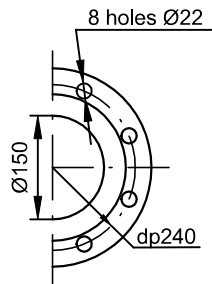
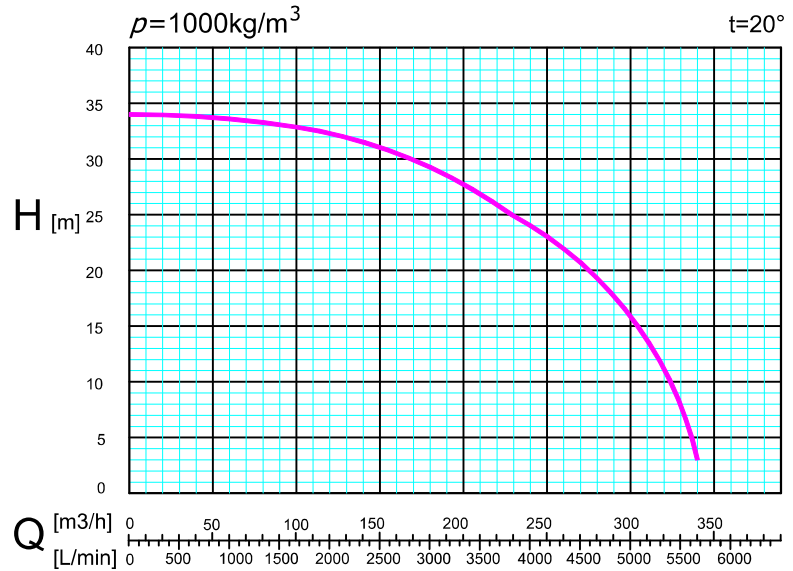
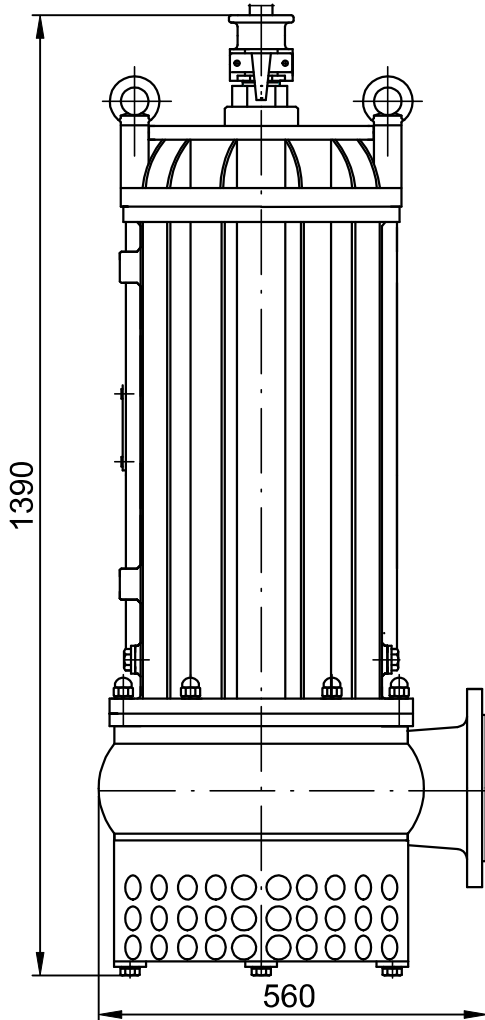


PUMP CHARACTERISTICS



- * impeller construction:
— closed impeller (z)
- * voltage version:
 A - voltage 500V
 B - voltage 1000V
 C - voltage 500/1000V
 switchable engine

Pump is certified ATEX, number: OBAC 11 ATEX 662X

PARAMETERS OF THE PUMP

Efficiency	[m ³ /h]	0-340	
Lift height	[m]	34-3	
Power (nominal)	[kW]	37	
Voltage	[V]	500	1000
Nominal power consumption	[A]	54	27,2
Rotational speed	[rotation/min]	1475	
Weight	[kg]	530	
Maximal submergence level	[m]	20	
Protection degree		IP 68	
Explosion proof marking			IM2c Ex dl Mb
Max impurity	[mm]	35	